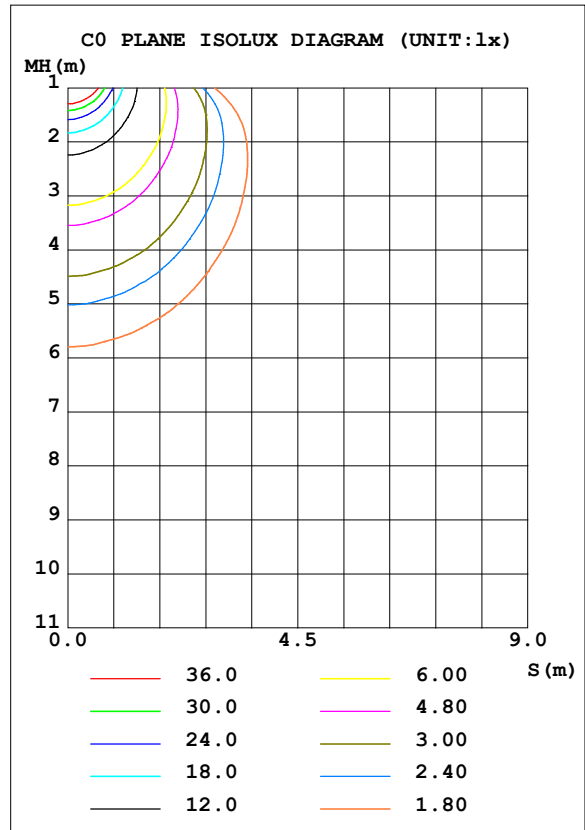
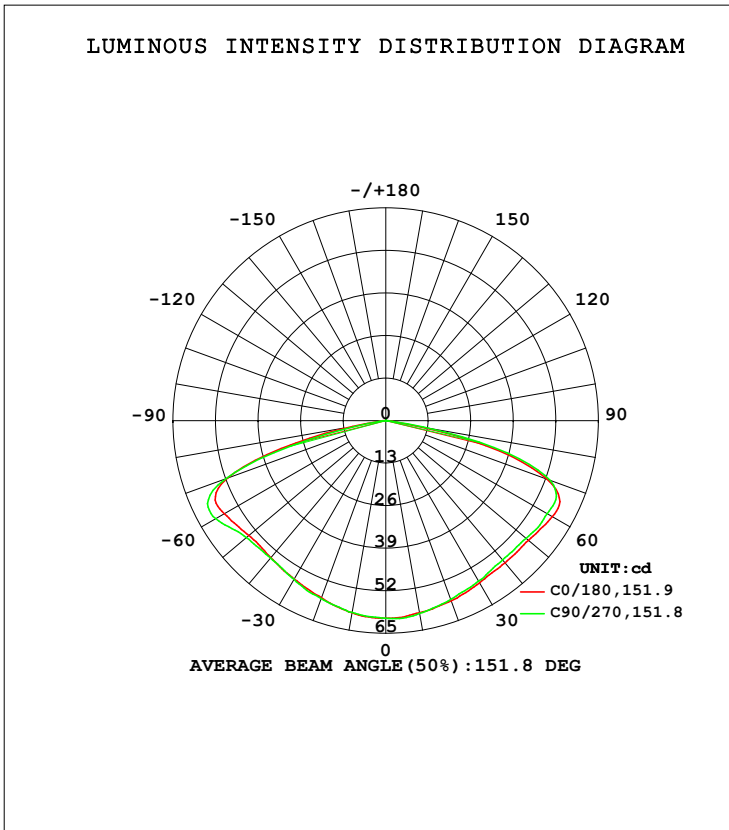


**LUMINAIRE PHOTOMETRIC TEST REPORT**

NAME: Emergency light	TYPE: : Indoor light fixture	WEIGHT:
SPEC.: 5000K	DIM.:	SERIAL No.: 1
MFR.:	SUR.: 0.0259	Shielding Angle:

DATA OF LAMP		PHOTOMETRIC DATA			
MODEL	EPE-3W-EM-3H-RL	Imax (cd)	60.58	S/MH (C0/180)	1.41
NOMINAL POWER (W)	2.1	LOR (%)	100.0	S/MH (C90/270)	1.41
RATED VOLTAGE (V)	3.5	TOTAL FLUX (lm)	267.27	η UP, DN (C0-180)	0.0, 50.5
NOMINAL FLUX (lm)	267.271	CIE CLASS	DIRECT	η UP, DN (C180-360)	0.0, 49.5
LAMPS INSIDE	1	η up (%)	0.0	CIBSE SHR NOM	1.75
TEST VOLTAGE (V)	230	η down (%)	100.0	CIBSE SHR MAX	1.75



C Range: 0 - 360DEG  
 C Interval: 45.0DEG  
 Test Speed: HIGH  
 Temperature: 25.3DEG  
 Operators: HGL  
 Test Date: 2023-12-04

γ Range: 0 - 180DEG  
 γ Interval: 1.0DEG  
 Test System: EVERFINE GO-2000H\_V1 SYSTEM V2.00.446  
 Humidity: 65.0%  
 Test Distance: 9.000m [K=1.0000]  
 Remarks:

ZONAL FLUX DIAGRAM

ZONAL FLUX DIAGRAM:

γ	C0	C45	C90	C135	C180	C225	C270	C315	γ	Φ zone	Φ total	%lum, lamp
10	59.60	59.79	59.82	59.58	59.65	59.56	59.49	59.99	0- 10	5.732	5.732	2.14,2.14
20	58.57	58.26	58.06	58.11	57.62	57.61	57.85	58.95	10- 20	16.67	22.41	8.38,8.38
30	57.30	57.22	56.61	56.94	55.92	55.81	56.09	57.51	20- 30	26.56	48.96	18.3,18.3
40	56.72	55.93	55.57	55.31	54.65	54.81	54.82	56.46	30- 40	35.19	84.15	31.5,31.5
50	56.92	55.65	55.98	54.64	54.60	55.36	55.64	56.24	40- 50	42.94	127.1	47.6,47.6
60	58.75	56.96	56.92	55.21	56.96	57.08	59.96	56.65	50- 60	50.64	177.7	66.5,66.5
70	52.53	54.90	53.52	50.05	51.40	49.47	51.97	49.35	60- 70	56.16	233.9	87.5,87.5
80	9.216	0.8892	11.74	5.263	10.23	1.579	5.615	5.559	70- 80	32.12	266.0	99.5,99.5
90	0	0	0	0	0	0	0	0	80- 90	1.218	267.2	100,100
100	0	0	0	0	0	0	0	0	90-100	0	267.2	100,100
110	0	0	0	0	0	0	0	0	100-110	0	267.2	100,100
120	0	0	0	0	0	0	0	0	110-120	0	267.2	100,100
130	0	0	0	0	0	0	0	0	120-130	0	267.2	100,100
140	0.0114	0.0002	0	0.0057	0.0114	0.0057	0.0284	0	130-140	0.0021	267.2	100,100
150	0.0114	0.0398	0.0057	0.0341	0.0284	0.0057	0.0398	0	140-150	0.0098	267.2	100,100
160	0.0169	0.0512	0.0567	0.0569	0.0512	0.0113	0.0512	0.0056	150-160	0.0126	267.3	100,100
170	0.0738	0.0682	0.0739	0.0682	0.0625	0.0511	0.0625	0.0454	160-170	0.0140	267.3	100,100
180	0.0796	0.0739	0.0625	0.0796	0.0852	0.0853	0.1024	0.0682	170-180	0.0068	267.3	100,100
DEG	LUMINOUS INTENSITY:cd									UNIT:lm		

Conical surface Flux(90deg): 104.68 lm

%lum = 39.2%

%lamp = 39.2%

Conical surface Flux(120deg): 177.73 lm

%lum = 66.5%

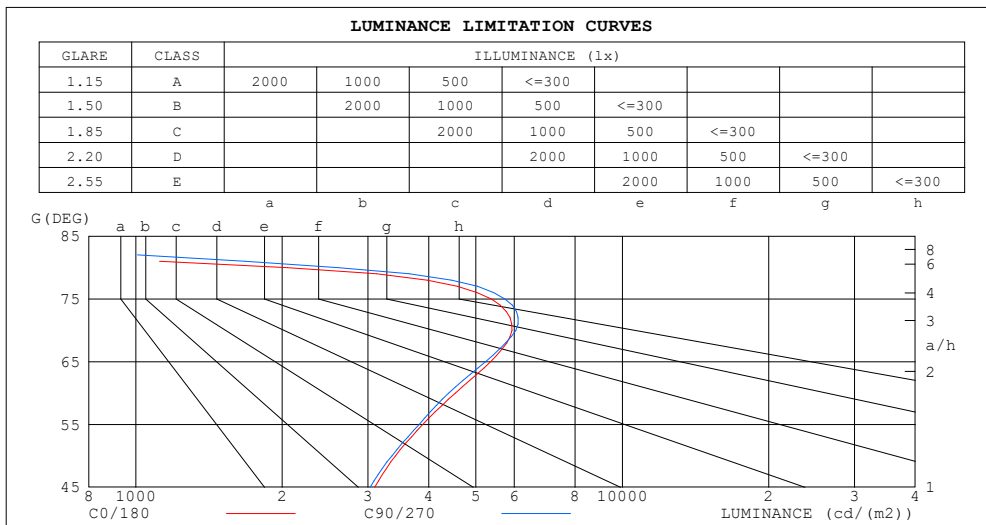
%lamp = 66.5%

C Range: 0 - 360DEG  
 C Interval: 45.0DEG  
 Test Speed: HIGH  
 Temperature:25.3DEG  
 Operators:HGL  
 Test Date:2023-12-04

γ Range: 0 - 180DEG  
 γ Interval: 1.0DEG  
 Test System:EVERFINE GO-2000H\_V1 SYSTEM V2.00.446  
 Humidity:65.0%  
 Test Distance:9.000m [K=1.0000]  
 Remarks:

**LUMINANCE LIMITATION CURVES**

<b>NAME:</b> Emergency light	<b>TYPE:</b> Indoor light fixture	<b>WEIGHT:</b>
<b>SPEC.:</b> 5000K	<b>DIM.:</b>	<b>SERIAL No.:</b> 1
<b>MFR.:</b>	<b>SUR.:</b> 0.0259	<b>Shielding Angle:</b>



LUMINANCE cd/(m2)		
G (DEG)	C0/180	C90/270
85	176	328
80	2050	2609
75	5385	5739
70	5931	6040
65	5362	5235
60	4538	4395
55	3888	3825
50	3420	3362
45	3099	3035

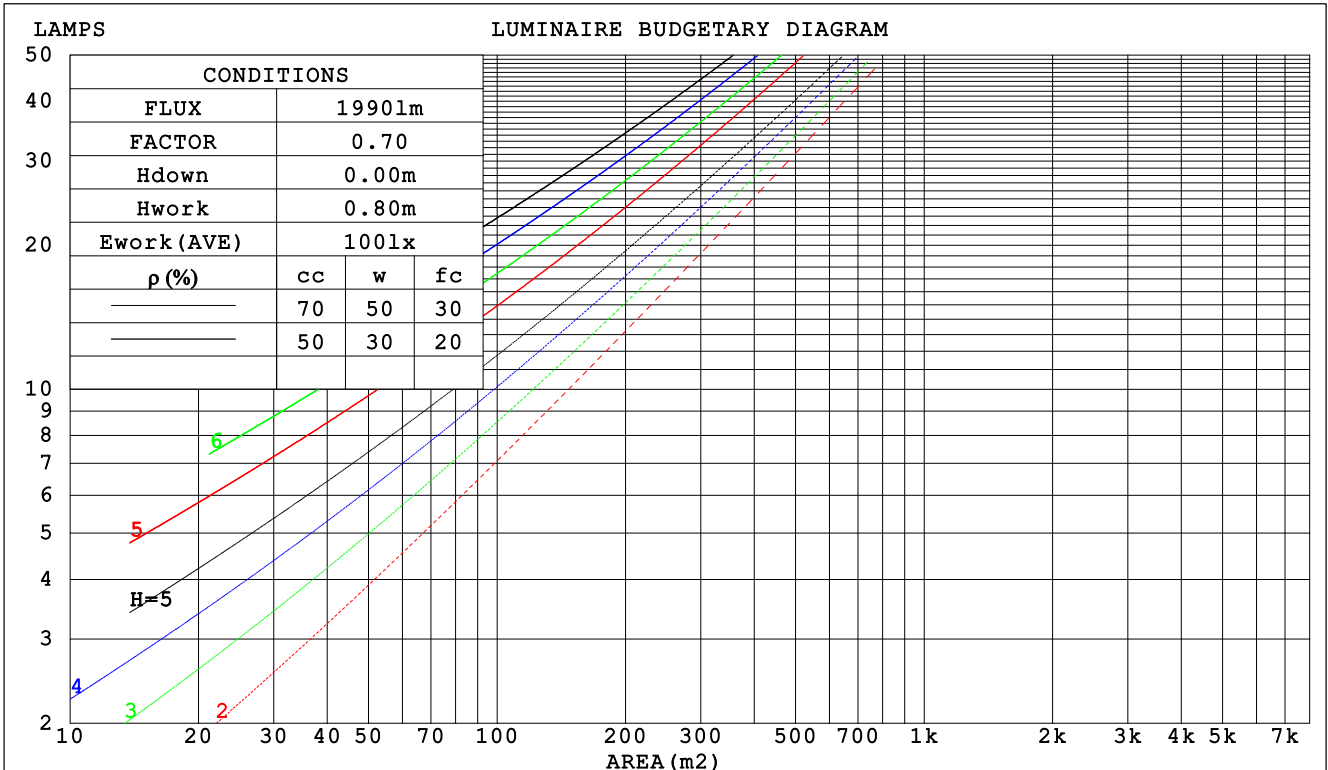
C Range: 0 - 360DEG  
 C Interval: 45.0DEG  
 Test Speed: HIGH  
 Temperature: 25.3DEG  
 Operators: HGL  
 Test Date: 2023-12-04

γ Range: 0 - 180DEG  
 γ Interval: 1.0DEG  
 Test System: EVERFINE GO-2000H\_V1 SYSTEM V2.00.446  
 Humidity: 65.0%  
 Test Distance: 9.000m [K=1.0000]  
 Remarks:

CU AND LUMINAIRE BUDGETARY ESTIMATE DIAGRAM

NAME: Emergency light	TYPE: : Indoor light fixture	WEIGHT:
SPEC.: 5000K	DIM.:	SERIAL No.: 1
MFR.:	SUR.: 0.0259	Shielding Angle:

ρcc	80%			70%			50%			30%			10%			0
ρw	50%	30%	10%	50%	30%	10%	50%	30%	10%	50%	30%	10%	50%	30%	10%	0
ρfc	20%			20%			20%			20%			20%			0
RCR	RCR:Room Cavity Ratio						Coefficients of Utilization(CU)									
0.0	1.19	1.19	1.19	1.16	1.16	1.16	1.11	1.11	1.11	1.06	1.06	1.06	1.02	1.02	1.02	.00
1.0	1.02	.97	.93	.00	.95	.91	.95	.92	.88	.91	.88	.85	.88	.85	.83	.81
2.0	.86	.78	.72	.84	.77	.71	.81	.74	.69	.77	.72	.67	.74	.70	.66	.64
3.0	.74	.64	.57	.72	.63	.56	.69	.61	.55	.66	.60	.54	.63	.58	.53	.51
4.0	.64	.54	.46	.62	.53	.46	.60	.52	.45	.57	.50	.45	.55	.49	.44	.42
5.0	.56	.46	.39	.55	.45	.38	.53	.44	.38	.51	.43	.37	.49	.42	.37	.35
6.0	.50	.40	.33	.49	.39	.33	.47	.39	.32	.45	.38	.32	.43	.37	.32	.29
7.0	.45	.35	.28	.44	.35	.28	.42	.34	.28	.41	.33	.28	.39	.33	.27	.25
8.0	.40	.31	.25	.40	.31	.25	.38	.30	.25	.37	.30	.24	.36	.29	.24	.22
9.0	.37	.28	.22	.36	.28	.22	.35	.27	.22	.34	.27	.22	.33	.26	.21	.19
10.0	.34	.25	.20	.33	.25	.20	.32	.25	.19	.31	.24	.19	.30	.24	.19	.17



C Range: 0 - 360DEG  
 C Interval: 45.0DEG  
 Test Speed: HIGH  
 Temperature:25.3DEG  
 Operators:HGL  
 Test Date:2023-12-04

γ Range: 0 - 180DEG  
 γ Interval: 1.0DEG  
 Test System:EVERFINE GO-2000H\_V1 SYSTEM V2.00.446  
 Humidity:65.0%  
 Test Distance:9.000m [K=1.0000]  
 Remarks:

WEC AND CCEC

NAME: Emergency light	TYPE: : Indoor light fixture	WEIGHT:
SPEC.: 5000K	DIM.:	SERIAL No.: 1
MFR.:	SUR.: 0.0259	Shielding Angle:

ρ <sub>cc</sub>	80%			70%			50%			30%			10%			0
ρ <sub>w</sub>	50%	30%	10%	50%	30%	10%	50%	30%	10%	50%	30%	10%	50%	30%	10%	0
ρ <sub>fc</sub>	20%			20%			20%			20%			20%			0
RCR	RCR:Room Cavity Ratio						Wall Exitance Coefficients (WEC)									
0.0																
1.0	.348	.198	.063	.341	.194	.062	.327	.188	.060	.315	.182	.058	.303	.176	.057	
2.0	.333	.182	.056	.326	.180	.055	.314	.175	.054	.303	.170	.053	.293	.166	.052	
3.0	.306	.163	.049	.301	.161	.048	.290	.157	.048	.280	.153	.047	.271	.150	.046	
4.0	.280	.145	.043	.275	.144	.043	.265	.141	.042	.256	.138	.042	.248	.135	.041	
5.0	.256	.130	.038	.252	.129	.038	.243	.127	.037	.235	.124	.037	.228	.122	.037	
6.0	.235	.118	.034	.231	.117	.034	.223	.115	.033	.216	.112	.033	.210	.110	.033	
7.0	.217	.107	.030	.213	.106	.030	.206	.104	.030	.200	.103	.030	.194	.101	.030	
8.0	.201	.098	.028	.198	.097	.028	.192	.096	.027	.186	.094	.027	.181	.093	.027	
9.0	.187	.090	.025	.184	.090	.025	.179	.088	.025	.174	.087	.025	.169	.086	.025	
10.0	.175	.084	.023	.172	.083	.023	.167	.082	.023	.163	.081	.023	.158	.080	.023	

ρ <sub>cc</sub>	80%			70%			50%			30%			10%			0
ρ <sub>w</sub>	50%	30%	10%	50%	30%	10%	50%	30%	10%	50%	30%	10%	50%	30%	10%	0
ρ <sub>fc</sub>	20%			20%			20%			20%			20%			0
RCR	RCR:Room Cavity Ratio						Ceiling Cavity Exitance Coefficients (CCEC)									
0.0	.191	.191	.191	.163	.163	.163	.111	.111	.111	.064	.064	.064	.020	.020	.020	
1.0	.183	.156	.131	.157	.134	.113	.107	.092	.078	.062	.053	.046	.020	.017	.015	
2.0	.178	.132	.093	.152	.113	.081	.104	.079	.056	.060	.046	.033	.019	.015	.011	
3.0	.172	.115	.069	.147	.099	.060	.101	.069	.042	.058	.040	.025	.019	.013	.008	
4.0	.165	.102	.054	.141	.088	.047	.097	.061	.033	.056	.036	.019	.018	.012	.006	
5.0	.157	.092	.043	.135	.079	.038	.093	.055	.027	.054	.033	.016	.017	.011	.005	
6.0	.150	.084	.036	.129	.072	.032	.089	.051	.022	.051	.030	.013	.017	.010	.004	
7.0	.142	.077	.031	.122	.067	.027	.085	.047	.019	.049	.028	.011	.016	.009	.004	
8.0	.135	.071	.027	.117	.062	.023	.081	.043	.017	.047	.026	.010	.015	.008	.003	
9.0	.129	.066	.024	.111	.057	.021	.077	.040	.015	.045	.024	.009	.014	.008	.003	
10.0	.123	.062	.021	.106	.054	.019	.073	.038	.013	.043	.022	.008	.014	.007	.003	

C Range: 0 - 360DEG  
 C Interval: 45.0DEG  
 Test Speed: HIGH  
 Temperature:25.3DEG  
 Operators:HGL  
 Test Date:2023-12-04

γ Range: 0 - 180DEG  
 γ Interval: 1.0DEG  
 Test System:EVERFINE GO-2000H\_V1 SYSTEM V2.00.446  
 Humidity:65.0%  
 Test Distance:9.000m [K=1.0000]  
 Remarks:

**UGR(Unified Glare Rating) Table**

NAME: Emergency light	TYPE: : Indoor light fixture	WEIGHT:
SPEC.: 5000K	DIM.:	SERIAL No.: 1
MFR.:	SUR.: 0.0259	Shielding Angle:

ceiling/cavity	0.7	0.7	0.5	0.5	0.3	0.7	0.7	0.5	0.5	0.3
walls	0.5	0.3	0.5	0.3	0.3	0.5	0.3	0.5	0.3	0.3
working plane	0.2	0.2	0.2	0.2	0.2	0.2	0.2	0.2	0.2	0.2
Room dimensions	Viewed crosswise					Viewed endwise				
x = 2H y = 2H	23.2	24.9	23.5	25.1	25.3	23.1	24.8	23.4	25.0	25.2
3H	26.2	27.8	26.6	28.1	28.3	26.2	27.8	26.5	28.0	28.3
4H	27.2	28.7	27.6	29.0	29.3	27.3	28.8	27.6	29.1	29.4
6H	27.5	28.9	27.8	29.2	29.5	27.6	29.1	28.0	29.3	29.6
8H	27.4	28.8	27.8	29.1	29.4	27.6	29.0	28.0	29.3	29.6
12H	27.4	28.7	27.7	29.0	29.3	27.5	28.9	27.9	29.2	29.5
4H 2H	24.3	25.8	24.7	26.1	26.4	24.3	25.8	24.6	26.0	26.3
3H	27.4	28.8	27.8	29.1	29.4	27.4	28.8	27.8	29.1	29.4
4H	28.4	29.7	28.8	30.0	30.3	28.5	29.7	28.9	30.1	30.4
6H	28.7	29.8	29.1	30.1	30.5	28.8	29.9	29.2	30.3	30.6
8H	28.6	29.6	29.1	30.0	30.4	28.8	29.8	29.2	30.2	30.6
12H	28.6	29.5	29.0	29.9	30.3	28.8	29.7	29.2	30.1	30.5
8H 4H	28.7	29.7	29.1	30.1	30.5	28.8	29.8	29.2	30.1	30.5
6H	28.9	29.8	29.4	30.2	30.6	29.1	29.9	29.5	30.3	30.7
8H	28.9	29.6	29.4	30.1	30.5	29.0	29.8	29.5	30.2	30.7
12H	28.9	29.5	29.3	30.0	30.4	29.0	29.7	29.5	30.1	30.6
12H 4H	28.6	29.6	29.1	30.0	30.4	28.7	29.6	29.1	30.0	30.4
6H	28.9	29.6	29.4	30.1	30.5	29.0	29.8	29.5	30.2	30.7
8H	28.9	29.5	29.4	30.0	30.4	29.0	29.7	29.5	30.1	30.6
Variations with the observer position at spacings(CIE Pub.117):										
S = 1.0H	+ 0.1 / - 0.1					+ 0.1 / - 0.1				
1.5H	+ 0.1 / - 0.3					+ 0.1 / - 0.3				
2.0H	+ 0.2 / - 0.4					+ 0.1 / - 0.4				

CIE Pub.117, 267.3 lm Total Lamp Luminous Flux Correct (8log(F/F0) = -4.6)  
 Area: 0.0259 m2

C Range: 0 - 360DEG  
 C Interval: 45.0DEG  
 Test Speed: HIGH  
 Temperature:25.3DEG  
 Operators:HGL  
 Test Date:2023-12-04

γ Range: 0 - 180DEG  
 γ Interval: 1.0DEG  
 Test System:EVERFINE GO-2000H\_V1 SYSTEM V2.00.446  
 Humidity:65.0%  
 Test Distance:9.000m [K=1.0000]  
 Remarks:

**UTILIZATION FACTORS TABLE**

NAME: Emergency light	TYPE: : Indoor light fixture	WEIGHT:
SPEC.: 5000K	DIM.:	SERIAL No.: 1
MFR.:	SUR.: 0.0259	Shielding Angle:

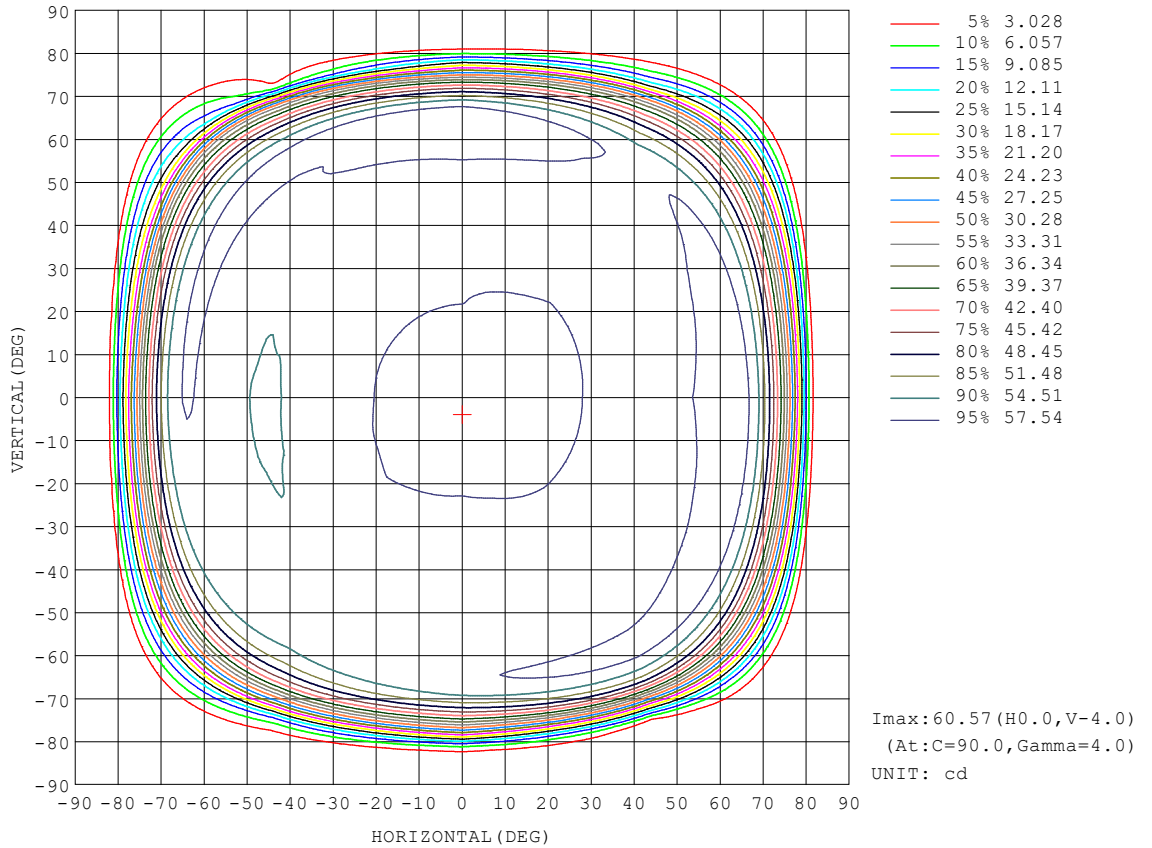
REFLECTANCE										
Ceiling	0.8	0.8	0.8	0.7	0.7	0.7	0.5	0.5	0.5	0
Walls	0.7	0.5	0.3	0.7	0.5	0.3	0.7	0.5	0.3	0
Working plane	0.2	0.2	0.2	0.2	0.2	0.2	0.2	0.2	0.2	0
ROOM INDEX	UTILIZATION FACTORS (PERCENT) $k(RI) \times RCR = 5$									
k = 0.60	51	38	30	50	38	30	49	37	30	23
0.80	60	47	39	59	47	39	57	46	38	30
1.00	69	56	47	67	55	47	65	57	47	38
1.25	76	64	56	75	63	55	72	62	54	46
1.50	82	70	62	80	69	62	77	67	60	52
2.00	90	80	72	88	79	72	84	76	70	61
2.50	95	86	79	93	85	78	89	82	76	67
3.00	99	91	85	97	90	84	93	87	82	72
4.00	104	98	92	102	96	91	97	93	88	79
5.00	107	102	97	105	100	96	100	96	93	83
ROOM INDEX	UF(total)									Direct
According to DIN EN 13032-2 2004			Suspended				SHRNOM = 1.25			

C Range: 0 - 360DEG  
 C Interval: 45.0DEG  
 Test Speed: HIGH  
 Temperature: 25.3DEG  
 Operators: HGL  
 Test Date: 2023-12-04

$\gamma$  Range: 0 - 180DEG  
 $\gamma$  Interval: 1.0DEG  
 Test System: EVERFINE GO-2000H\_V1 SYSTEM V2.00.446  
 Humidity: 65.0%  
 Test Distance: 9.000m [K=1.0000]  
 Remarks:

**ISOCANDELA DIAGRAM**

NAME: Emergency light	TYPE: : Indoor light fixture	WEIGHT:
SPEC.: 5000K	DIM.:	SERIAL No.: 1
MFR.:	SUR.: 0.0259	Shielding Angle:



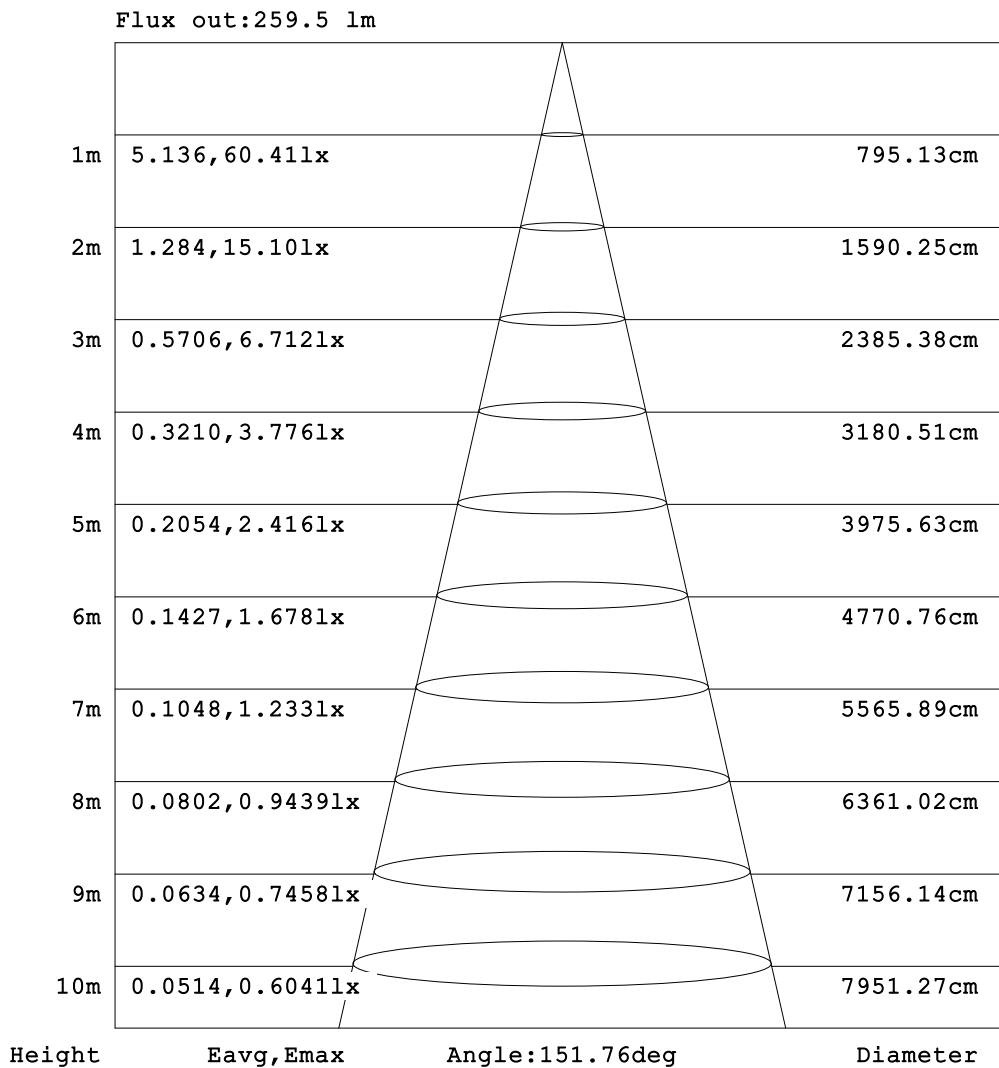
C Range: 0 - 360DEG  
 C Interval: 45.0DEG  
 Test Speed: HIGH  
 Temperature: 25.3DEG  
 Operators: HGL  
 Test Date: 2023-12-04

γ Range: 0 - 180DEG  
 γ Interval: 1.0DEG  
 Test System: EVERFINE GO-2000H\_V1 SYSTEM V2.00.446  
 Humidity: 65.0%  
 Test Distance: 9.000m [K=1.0000]  
 Remarks:



**AAI Figure**

NAME: Emergency light	TYPE: : Indoor light fixture	WEIGHT:
SPEC.: 5000K	DIM.:	SERIAL No.: 1
MFR.:	SUR.: 0.0259	Shielding Angle:



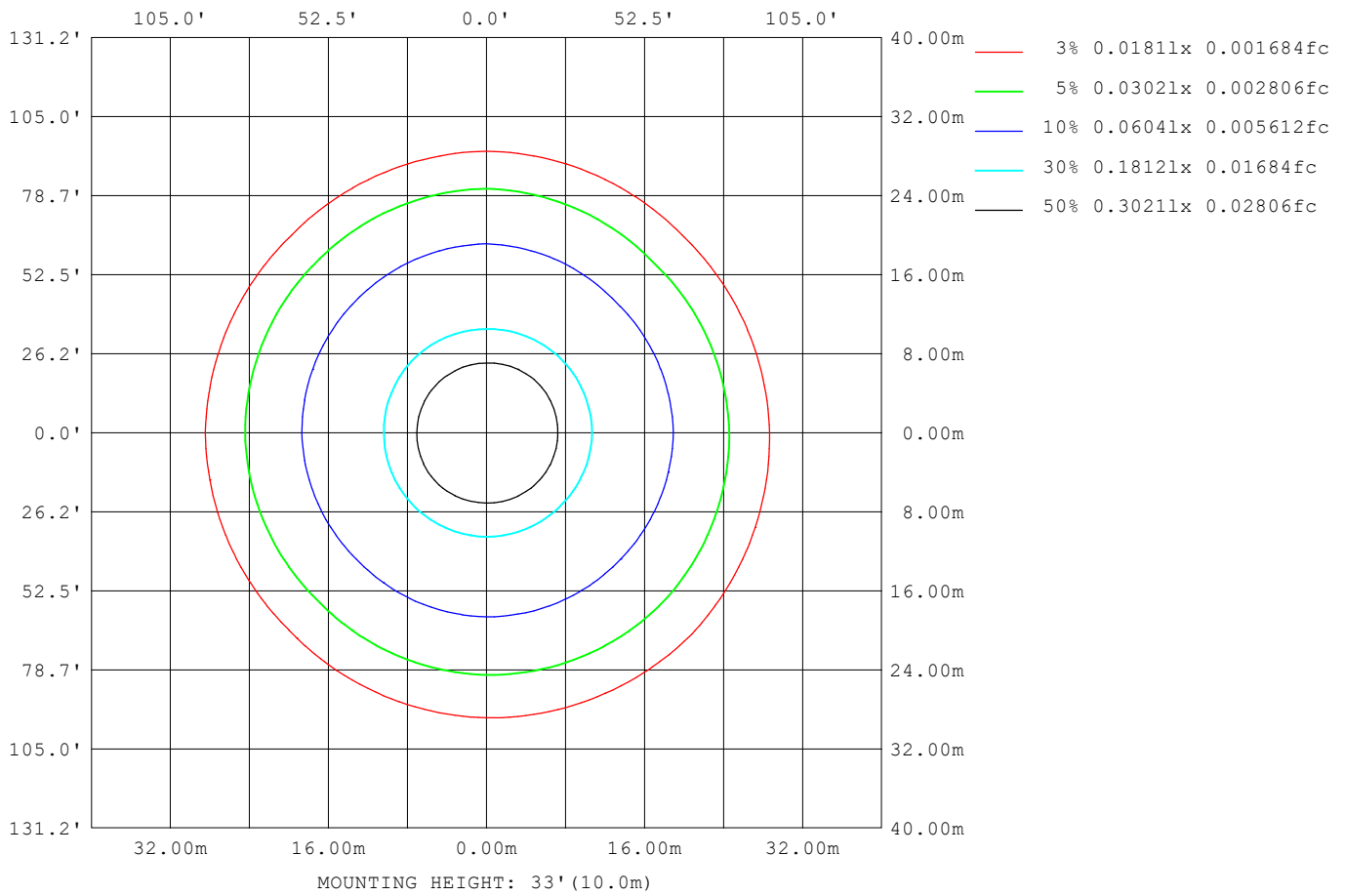
Note: The Curves indicate the illuminated area and the average illumination when the luminaire is at different distance.

C Range: 0 - 360DEG  
 C Interval: 45.0DEG  
 Test Speed: HIGH  
 Temperature: 25.3DEG  
 Operators: HGL  
 Test Date: 2023-12-04

γ Range: 0 - 180DEG  
 γ Interval: 1.0DEG  
 Test System: EVERFINE GO-2000H\_V1 SYSTEM V2.00.446  
 Humidity: 65.0%  
 Test Distance: 9.000m [K=1.0000]  
 Remarks:

**ISOLUX DIAGRAM**

NAME: Emergency light	TYPE: : Indoor light fixture	WEIGHT:
SPEC.: 5000K	DIM.:	SERIAL No.: 1
MFR.:	SUR.: 0.0259	Shielding Angle:



C Range: 0 - 360DEG  
 C Interval: 45.0DEG  
 Test Speed: HIGH  
 Temperature: 25.3DEG  
 Operators: HGL  
 Test Date: 2023-12-04

γ Range: 0 - 180DEG  
 γ Interval: 1.0DEG  
 Test System: EVERFINE GO-2000H\_V1 SYSTEM V2.00.446  
 Humidity: 65.0%  
 Test Distance: 9.000m [K=1.0000]  
 Remarks:

LED Avg.L Report

NAME: Emergency light	TYPE: : Indoor light fixture	WEIGHT:
SPEC.: 5000K	DIM.:	SERIAL No.: 1
MFR.:	SUR.: 0.0259	Shielding Angle:

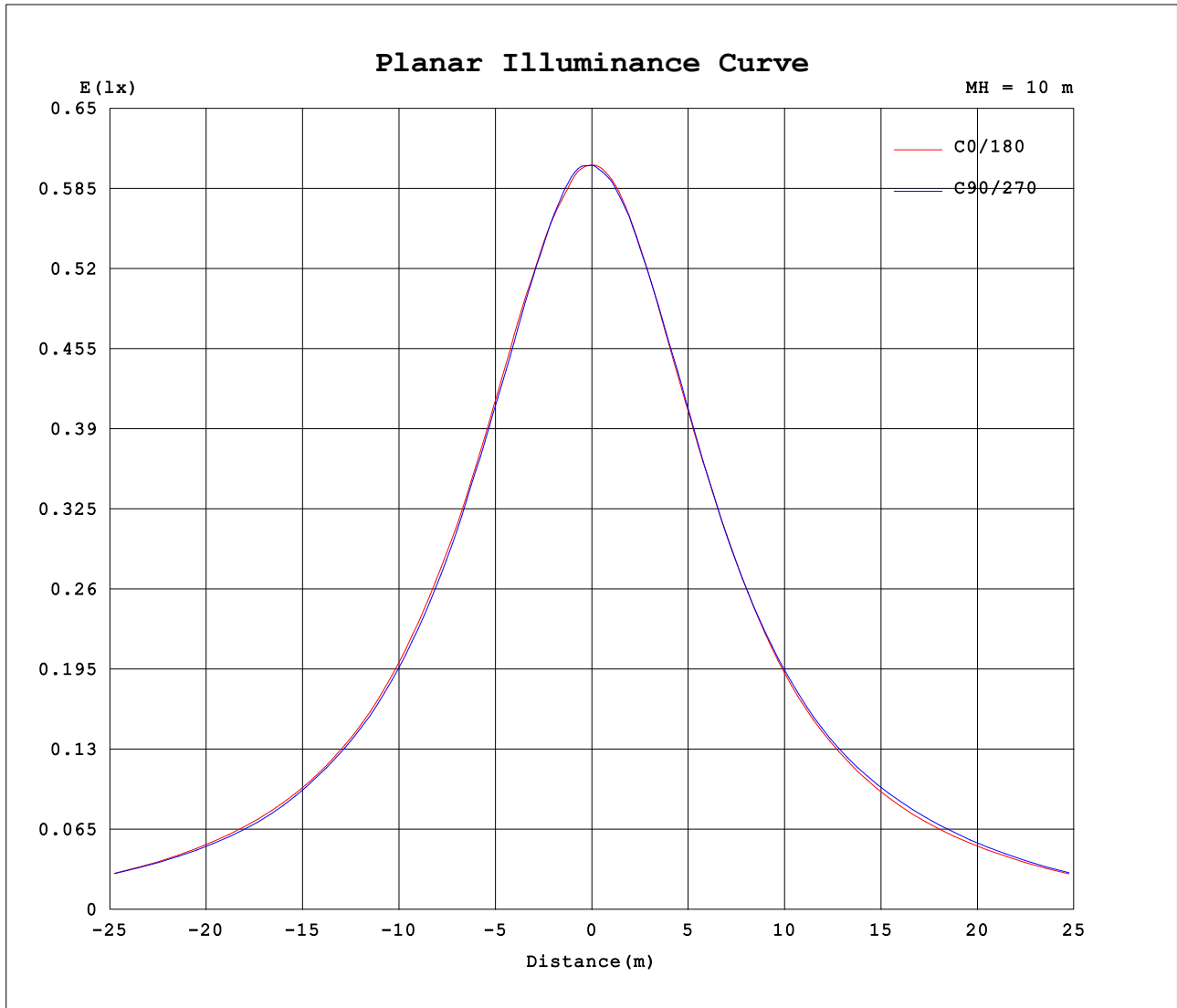
AvgL	cd/m2
L_0~180 (65) av	5309
L_0~180 (75) av	5165
L_0~180 (85) av	324
L_90~270 (65) av	5364
L_90~270 (75) av	5105
L_90~270 (85) av	164
L_45 (65) av	5209
L_45 (75) av	4375
L_45 (85) av	120

Standard: GB/T 29293-2012

C Range: 0 - 360DEG  
 C Interval: 45.0DEG  
 Test Speed: HIGH  
 Temperature:25.3DEG  
 Operators:HGL  
 Test Date:2023-12-04

γ Range: 0 - 180DEG  
 γ Interval: 1.0DEG  
 Test System:EVERFINE GO-2000H\_V1 SYSTEM V2.00.446  
 Humidity:65.0%  
 Test Distance:9.000m [K=1.0000]  
 Remarks:

**Planar Illuminance Curve**



C Range: 0 - 360DEG  
 C Interval: 45.0DEG  
 Test Speed: HIGH  
 Temperature: 25.3DEG  
 Operators: HGL  
 Test Date: 2023-12-04

$\gamma$  Range: 0 - 180DEG  
 $\gamma$  Interval: 1.0DEG  
 Test System: EVERFINE GO-2000H\_V1 SYSTEM V2.00.446  
 Humidity: 65.0%  
 Test Distance: 9.000m [K=1.0000]  
 Remarks:

**LUMINOUS DISTRIBUTION INTENSITY DATA**

NAME: Emergency light	TYPE: : Indoor light fixture	WEIGHT:
SPEC.: 5000K	DIM.:	SERIAL No.: 1
MFR.:	SUR.: 0.0259	Shielding Angle:

Table--1

UNIT: cd

C (DEG) \ γ (DEG)	0	45	90	135	180	225	270	315											
0	60.4	60.4	60.4	60.4	60.4	60.4	60.4	60.4											
5	60.3	60.3	60.5	60.2	60.2	60.1	60.1	60.3											
10	59.6	59.8	59.8	59.6	59.6	59.6	59.5	60.0											
15	59.1	59.1	58.9	58.7	58.7	58.5	58.6	59.5											
20	58.6	58.3	58.1	58.1	57.6	57.6	57.9	59.0											
25	57.9	57.8	57.3	57.6	56.7	56.5	57.2	58.4											
30	57.3	57.2	56.6	56.9	55.9	55.8	56.1	57.5											
35	56.7	56.7	55.9	56.2	55.3	55.1	55.2	56.9											
40	56.7	55.9	55.6	55.3	54.6	54.8	54.8	56.5											
45	56.7	55.5	55.6	54.8	54.3	55.0	55.0	56.1											
50	56.9	55.6	56.0	54.6	54.6	55.4	55.6	56.2											
55	57.7	56.2	56.8	54.6	55.7	56.2	57.5	56.3											
60	58.7	57.0	56.9	55.2	57.0	57.1	60.0	56.6											
65	58.7	58.4	57.3	55.2	57.6	58.2	60.1	56.2											
70	52.5	54.9	53.5	50.1	51.4	49.5	52.0	49.4											
75	36.1	32.8	38.5	32.1	33.2	22.2	30.0	30.3											
80	9.22	0.89	11.7	5.26	10.2	1.58	5.62	5.56											
85	0.40	0.00	0.74	0.51	1.06	0.26	0.00	0.32											
90	0.00	0.00	0.00	0.00	0.00	0.00	0.00	0.00											
95	0.00	0.00	0.00	0.00	0.00	0.00	0.00	0.00											
100	0.00	0.00	0.00	0.00	0.00	0.00	0.00	0.00											
105	0.00	0.00	0.00	0.00	0.00	0.00	0.00	0.00											
110	0.00	0.00	0.00	0.00	0.00	0.00	0.00	0.00											
115	0.00	0.00	0.00	0.00	0.00	0.00	0.00	0.00											
120	0.00	0.00	0.00	0.00	0.00	0.00	0.00	0.00											
125	0.00	0.00	0.00	0.00	0.00	0.00	0.00	0.00											
130	0.00	0.00	0.00	0.00	0.00	0.00	0.00	0.00											
135	0.00	0.00	0.00	0.00	0.00	0.00	0.01	0.00											
140	0.01	0.00	0.00	0.01	0.01	0.01	0.03	0.00											
145	0.01	0.03	0.01	0.02	0.03	0.01	0.03	0.00											
150	0.01	0.04	0.01	0.03	0.03	0.01	0.04	0.00											
155	0.01	0.05	0.03	0.05	0.03	0.01	0.05	0.00											
160	0.02	0.05	0.06	0.06	0.05	0.01	0.05	0.01											
165	0.06	0.07	0.05	0.06	0.07	0.02	0.06	0.02											
170	0.07	0.07	0.07	0.07	0.06	0.05	0.06	0.05											
175	0.07	0.07	0.07	0.09	0.07	0.07	0.08	0.08											
180	0.08	0.07	0.06	0.08	0.09	0.09	0.10	0.07											

C Range: 0 - 360DEG  
 C Interval: 45.0DEG  
 Test Speed: HIGH  
 Temperature:25.3DEG  
 Operators:HGL  
 Test Date:2023-12-04

γ Range: 0 - 180DEG  
 γ Interval: 1.0DEG  
 Test System:EVERFINE GO-2000H\_V1 SYSTEM V2.00.446  
 Humidity:65.0%  
 Test Distance:9.000m [K=1.0000]  
 Remarks: